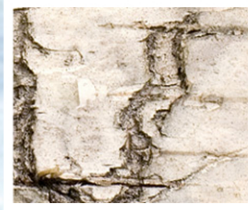


5th Annual Wyoming Snow Run



Welcome:

Pink Ribbon Riders

Togwotee Mountain Lodge looks forward to hosting you for the 5th annual Wyoming Snow Run on March 17th, 2012. Ready to book? Select which of the lodging options below suits you and give us a call. See you on the mountain soon! **Book now: call (866) 278-4245 and reference group code 2013B5.**

\$119 Lodge Room (sleeps 4): Newly redecorated for the 2012 winter and summer seasons! Our warm and inviting lodge rooms make your stay comfortable. New pillow-top beds with Dream Destination bedding, plush chocolate brown carpet, new ambient lighting with rustic wildlife motif, fresh wall colors, and flat screen televisions. We hope you enjoy the new look and feel of these cozy rooms. Located on the second floor of the main lodge featuring 2 queen beds and beautiful high-vaulted ceilings.

\$129 Family Suite (sleeps 6): Tucked away on the third floor of our lodge are our “family bunk rooms” including a bedroom (queen bed & twin sized bunk bed), living room, and expanded 2-part bathroom (privacy door separates shower from toilette and sink). Includes lmini-fridge, microwave and coffee maker. Perfect for a family of 4-6.

\$159 Standard Cabin/\$169 Cabin with Fireplace (sleeps 6): charming, rustic, and perfectly in tune with their surroundings, the cabins have two queen beds and a pull out sleeper sofa with full bathroom and kitchenette.

Snowmobile Rentals	Full Day (reduced only 3/16-3/19)	Minimum Age
Yamaha Venture Lite	\$129/\$164 2 pers.	13+
Polaris 550 Shift	\$159	13+
Polaris 600 RMK	\$174	16+
Polaris 800 RMK	\$199	21+
Arctic Cat M8	\$199	21+

Airport Shuttle

\$175 each way trip airport (van shares divide total)

Insurance: Venture & 550 (\$25/\$1,000), 600 (\$35/\$1,250), 800 & M8 (\$45/\$1,500)

Minimum Passenger Age: 8 years+ riding in the back, 5-7 years+ riding in the front.

Snowmobile Clothing: Rental shop offers helmets, bibs, jackets, boots, and mittens for \$19/day (no partial rentals; head socks not included; available in our gift shop).

National Forest Registration Permits: Required on all private sleds, available on-site for purchase.

